

KEY SHEET

REVISIONS		
DATE	NAME	LICENSE NO.
12/9/05	JAMES K. WALZ	246503402400
03/10/06	JAMES K. WALZ	246503402400

THIS IS TO CERTIFY THAT ON NOVEMBER 3, 1995, THE OFFICIAL MANTOLOKING BOROUGH TAX MAPS (CLOTH MATERIAL) WERE REPRODUCED IN EXACT FORM TO GENERATE NEW (MYLAR MATERIAL), REPRODUCIBLE DOCUMENTS FOR FUTURE USE. THE ORIGINAL, CLOTH MATERIAL TAX MAPS HAVE BEEN RETURNED TO THE BOROUGH FOR RECORD PURPOSES.

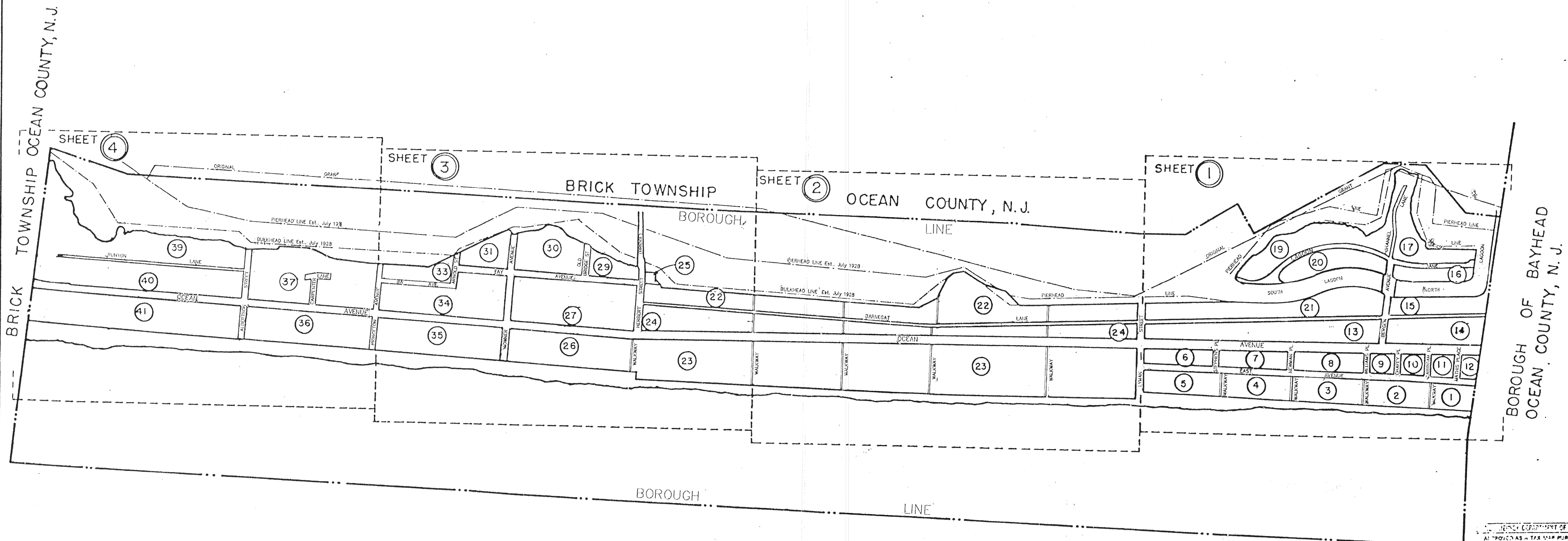
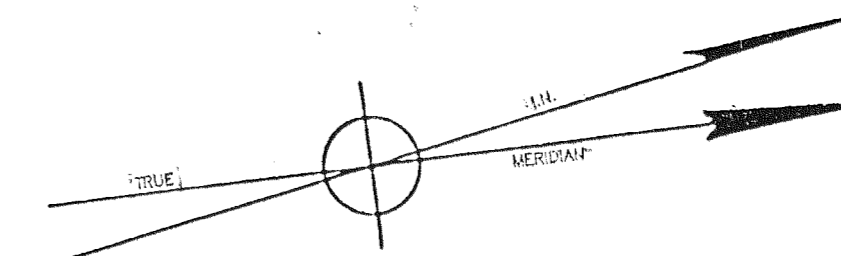
Thomas S. Guldin 11/4/95
 Thomas S. Guldin, PE - Borough Engineer date

LEGEND

- ① INDICATES DETAIL SHEET NUMBER
- ②③ INDICATES BLOCK NUMBER
- INDICATES AREA SHEET LIMITS

NOTE:
 BLOCK AND LOT NUMBERS SHOWN HEREON APPLY TO THIS MAP ONLY, WHICH SUPERSEDES MAP DATED 10 / 28 / 1930 & DEC. 1938

BARNEGAT BAY

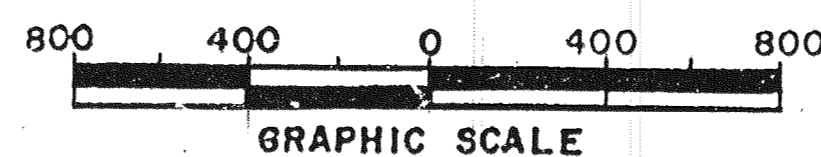


ATLANTIC

OCEAN

"I HEREBY CERTIFY THAT THIS TAX MAP HAS BEEN REVISED UNDER MY IMMEDIATE SUPERVISION AND COMPLIES WITH THE LAWS OF THE STATE OF NEW JERSEY"

James K. Walz 5/10/06
 JAMES K. WALZ
 PROFESSIONAL LAND SURVEYOR
 N.J. LICENSE NO. 246503402400



NEW JERSEY DEPARTMENT OF THE TREASURY
 DIVISION OF TAXATION
 PROPERTY ADMINISTRATION
 APPROVED AS A TAX MAP PURSUANT TO THE AUTHORITY OF N.J.A.C. 17:27 AND 17:28 FOR THE DIRECTOR, DIVISION OF TAXATION
James K. Walz CEA
 JAMES K. WALZ, LOCAL AGREEMENT CONSULTANT
 DATE: 3-1-2006 SERIAL NO. 894

I HEREBY CERTIFY THAT THIS MAP AND THE SURVEY HAS BEEN MADE UNDER MY IMMEDIATE SUPERVISION, AND COMPLIES WITH THE LAWS OF THE STATE OF NEW JERSEY.

Andrew Handzo
 ANDREW HANDZO, P.E.
 MUNICIPAL ENGINEER
 LIC. NO. 3773

"THIS TAX MAP SUPERCEDES TAX MAP APPROVED SEPTEMBER 17 1959"

NEW JERSEY DEPARTMENT OF THE TREASURY
 DIVISION OF TAXATION
 APPROVED AS A TAX MAP PURSUANT TO THE PROVISIONS OF CHAPTER 125 LAWS OF 1913
C. S. ...
 STATE ENGINEER
 SEP 17 2006 SERIAL NO. 248

TAX MAP
 BOROUGH OF MANTOLOKING
 OCEAN COUNTY, N. J.
 MAY 1959 SCALE 1"=400'
 ANDREW HANDZO
 POINT PLEASANT BEACH, N. J.

TO SHOW CONDITIONS AS OF DECEMBER 2016