

U.S. Department of Homeland Security
Region II
26 Federal Plaza, Room 1351
New York, New York 10278



FEMA

January 9, 2015

The Honorable George C. Nebel
Mayor of the Borough of Mantoloking
340 Drum Point Rd., 2nd Floor
P.O. Box 4391
Brick, NJ 08723

RE: Borough of Mantoloking, Ocean County, NJ
Preliminary Flood Insurance Study and
Flood Insurance Rate Map
Correspondence ID: 101

Dear Mayor Nebel:

This letter is in response to correspondence dated November 17, 2014, from Robert Mainberger, P.E., C.M.E., and Thomas Thornton, P.E., C.M.E., of Hatch Mott MacDonald regarding the flood hazard information shown on the preliminary Flood Insurance Rate Map (FIRM) and in the Flood Insurance Study (FIS) report for Ocean County, NJ, within the Borough of Mantoloking. Enclosed with their correspondence in support of this request was certified topography data.

We have reviewed the information provided and have determined that a change to the flood hazards on the preliminary FIRM is warranted. A summary of our findings is documented in the enclosed technical response. In the coming month, we will be releasing a revised preliminary FIRM and FIS report that reflect refined floodplain delineations in certain areas, as well as flood hazard changes resulting from comments such as this one, resolved prior to the release date. The release of the revised preliminary FIRM and FIS report will be followed by a statutory 90-day period provided for public review and submission of appeals and comments. The commencement date for the appeal period has not been established but is anticipated to be in early 2015. We will send letters to all affected communities approximately 2 weeks before the start of the 90-day appeal period to detail the appeal process.

Keep in mind, only requestors who submit through their local community during the 90-day appeal period and who meet the submission requirements defined in Title 44, Chapter I, Part 67 of the Code of Federal Regulations (44 CFR Part 67) are afforded appellant rights. The designation of a submittal as a formal appeal affords the community requestor the opportunity to have conflicting scientific or technical data reviewed by a Scientific Resolution Panel (SRP). SRPs are independent panels of experts in hydrology, hydraulics, and other pertinent sciences established to review conflicting scientific and technical data and provide recommendations for resolution. An SRP is an option after FEMA and community officials have been engaged in a collaborative consultation process for at least 60 days without a mutually acceptable resolution of an appeal. Further detail regarding the appeal process, data submittal requirements, and the SRP can be found in the enclosed document titled *Appeals and Comments on Preliminary Flood Insurance Rate Maps*.

Should you have further questions or concerns, please include the Correspondence ID (ID101) referenced above on any future related correspondence.

We hope this information is helpful in addressing your questions. If you have questions or need further assistance, please contact me at (212) 680-3638.

Sincerely,

A handwritten signature in cursive script that reads "Paul Weberg".

Paul Weberg, P.E.
Senior Engineer
FEMA Region II

Enclosures:

Appeals and Comments on Preliminary Flood Insurance Rate Maps
Technical Response to Comments on Preliminary Flood Insurance Rate Maps

cc: Robert Mainberger, P.E., C.M.E., Hatch Mott MacDonald
Thomas Thornton, P.E., C.M.E., Hatch Mott MacDonald
Mr. John Moyle, P.E., New Jersey Department of Environmental Protection
Mr. Joseph Ruggeri, P.E., New Jersey Department of Environmental Protection

Response to Comments Submitted by Hatch Mott MacDonald Regarding the Preliminary Flood Insurance Rate Maps (FIRMs) for the Borough of Mantoloking, Ocean County, NJ

On November 17, 2014, Hatch Mott MacDonald provided additional survey information to supplement the Light Detection and Ranging (LiDAR) used for the Ocean County, NJ Flood Insurance Study. Certification by a professional land surveyor of the additional survey information was received on November 24, 2014. An updated letter was supplied by Professional Land Surveyor James Walz on January 5, 2014 confirming that the survey data is in State Plane Coordinates North American Datum of 1983 (NAD 1983) (Horizontal) and North American Vertical Datum of 1988 (NAVD 1988) (Vertical).

The Wave Height Analysis for Flood Insurance Studies (WHAFIS) modeling results were reviewed for transects 4450, 4460, 4470, 4480, 4490, 4500, and 4510, which cover the area where additional topographic survey data was supplied. The modeling results show the VE/AE zone break occurs at approximately the 3.1 foot contour. At these locations, the VE/AE zone break is driven primarily by the nearshore topography data. At transects 4470 and 4500, the peak elevation does not reach 3.1 feet and the VE/AE zone break happens due to obstructions and not simply elevation changes.

For this analysis, the survey data was converted into ArcGIS shapefiles. In the figures below, areas with elevations above 3.1 feet are shown as green dots and areas lower than 3.1 feet are shown as red dots. In addition to the topographic survey data supplied by Hatch Mott MacDonald, the LiDAR data used for the Flood Insurance Study was also reviewed in detail. The VE/AE zone break will be revised approximately as shown in the figures below. The buildings footprints shown in blue are buildings that will remain partially in the VE Zone. To remove these structures from the VE Zone identification, additional survey data showing NFIP requirements have been met will be necessary.

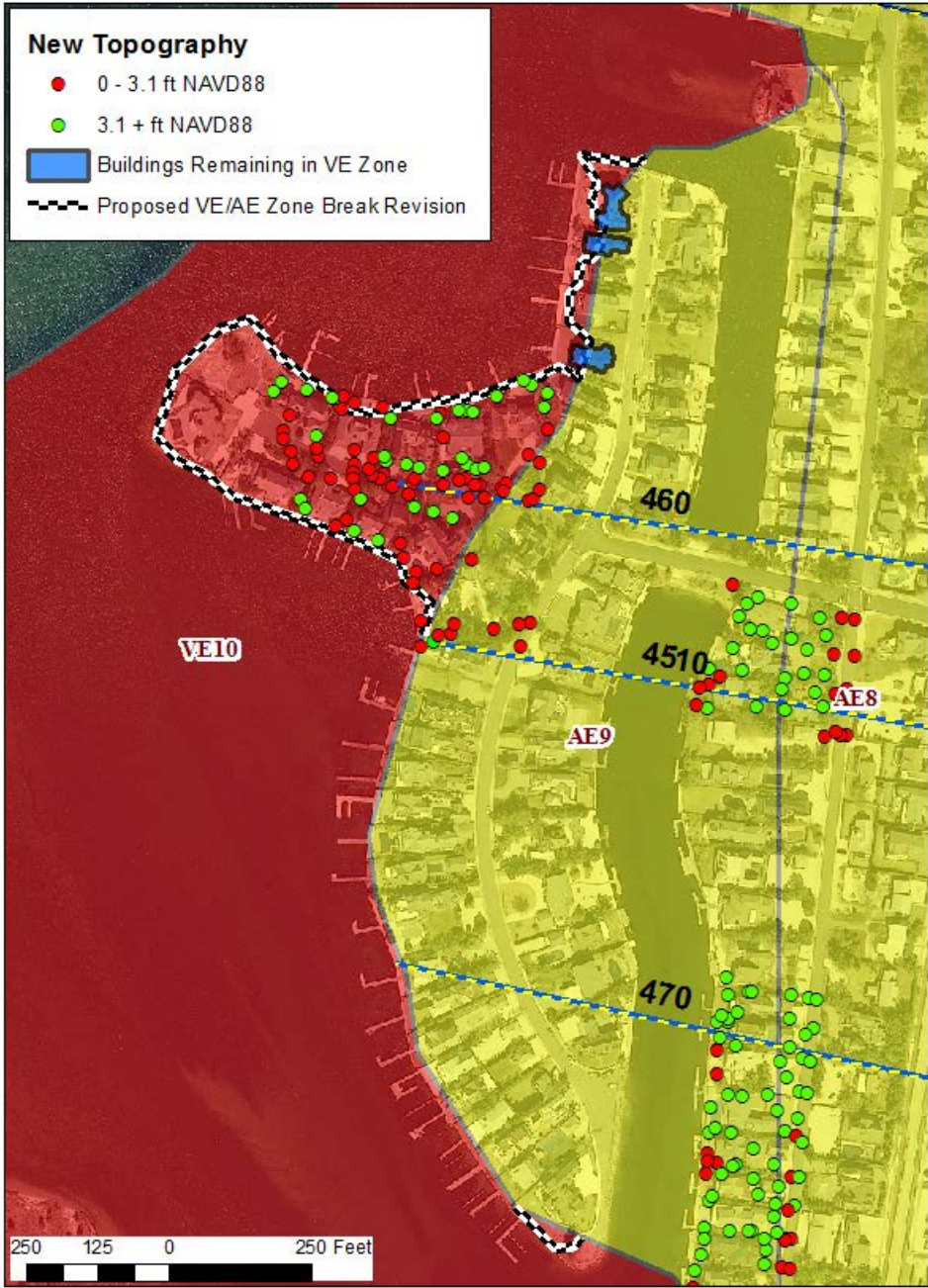


Figure 1. Proposed revisions to VE/AE Zone break in the Borough of Mantoloking, Ocean County, NJ

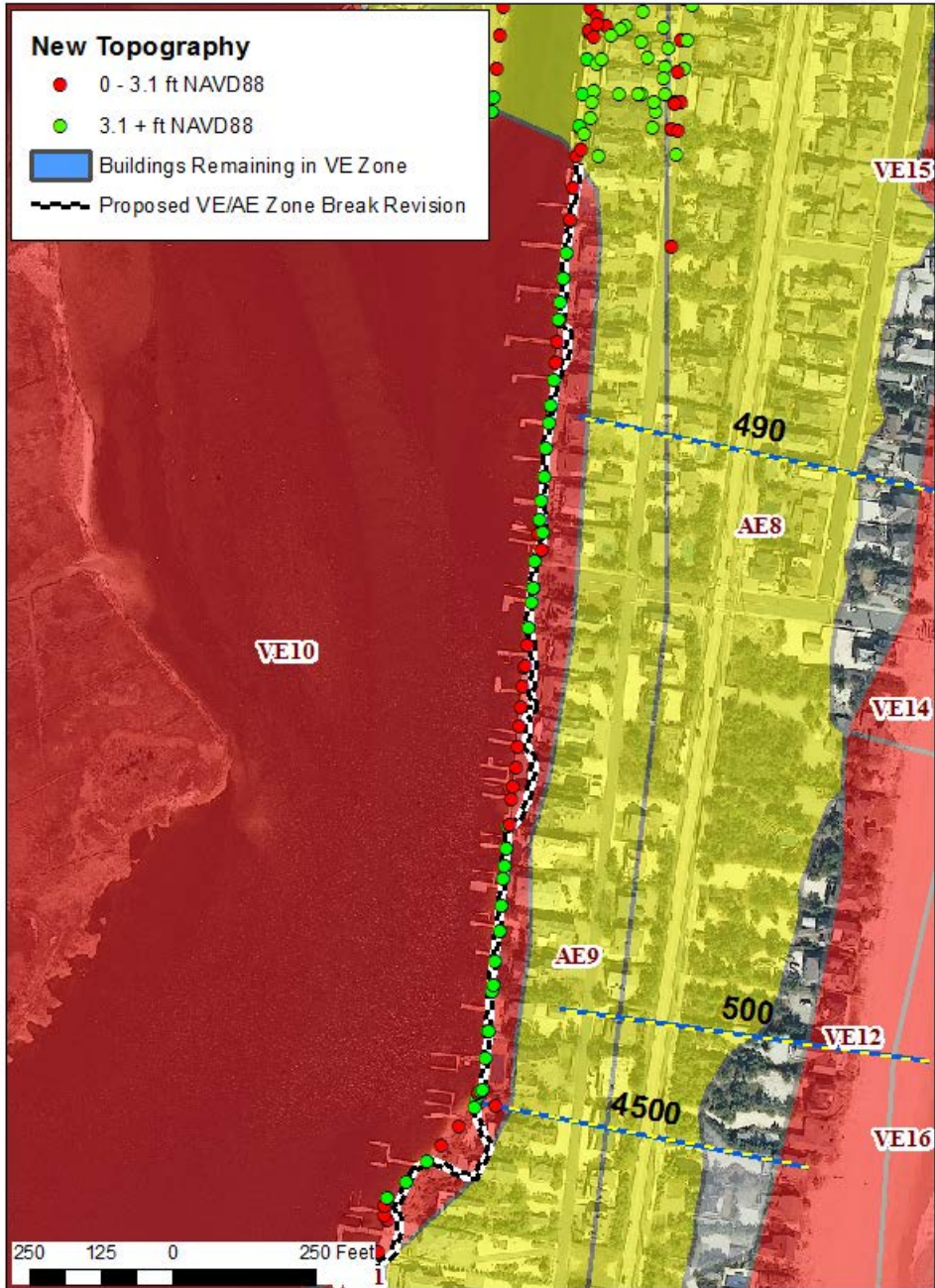


Figure 2. Proposed revisions to VE/AE Zone break in the Borough of Mantoloking, Ocean County, NJ

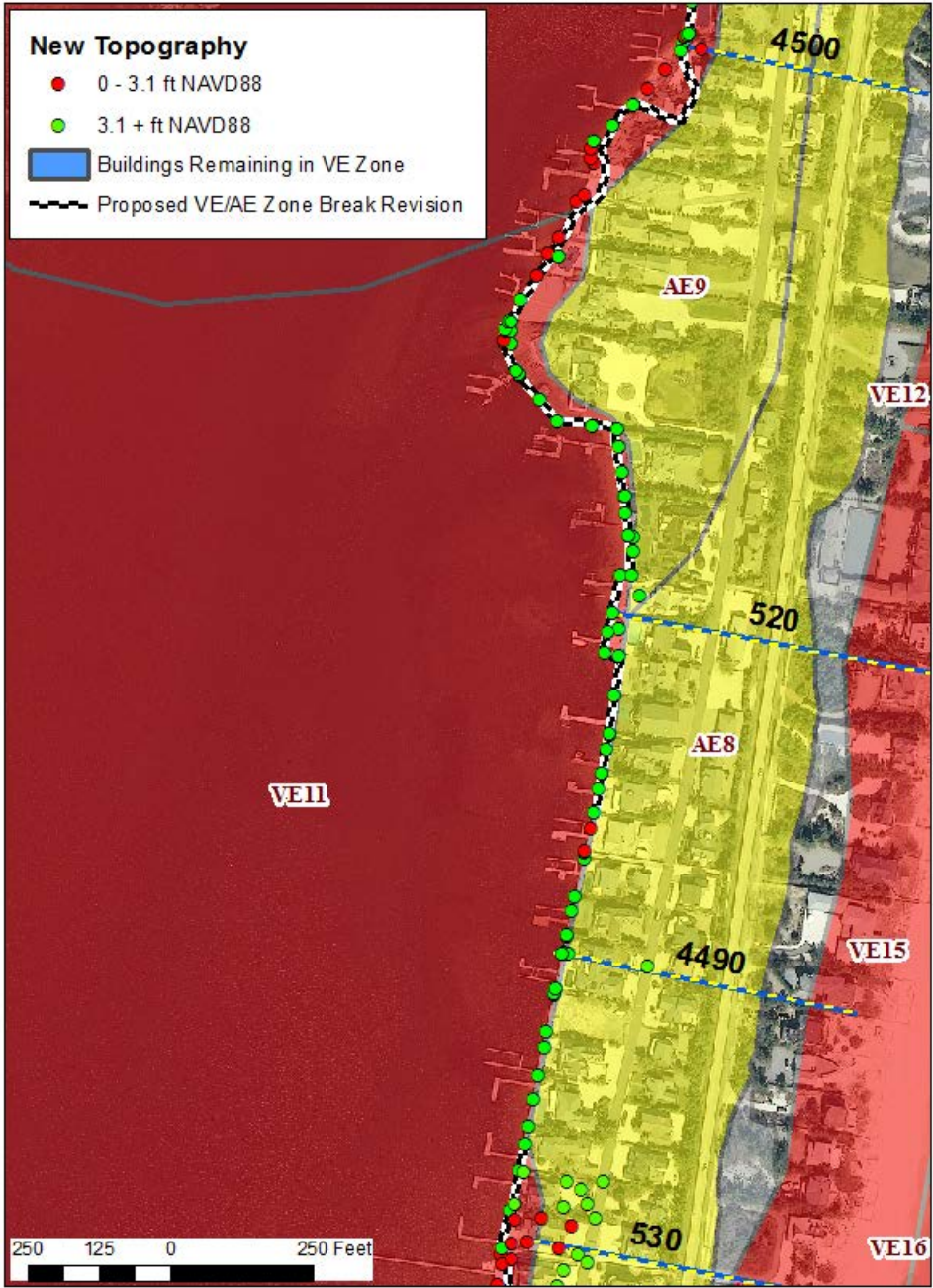


Figure 3. Proposed revisions to VE/AE Zone break in the Borough of Mantoloking, Ocean County, NJ

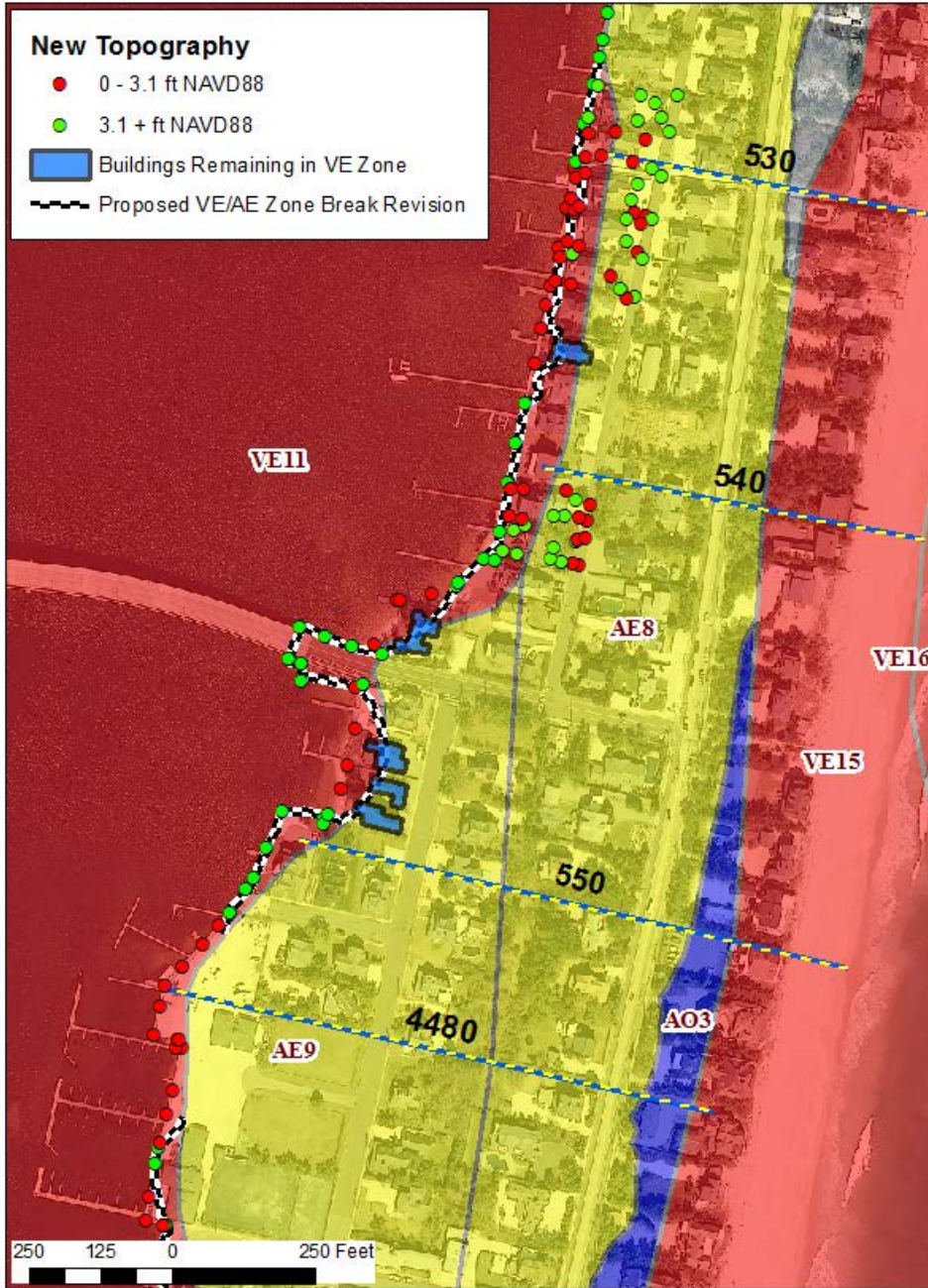


Figure 4. Proposed revisions to VE/AE Zone break in the Borough of Mantoloking, Ocean County, NJ

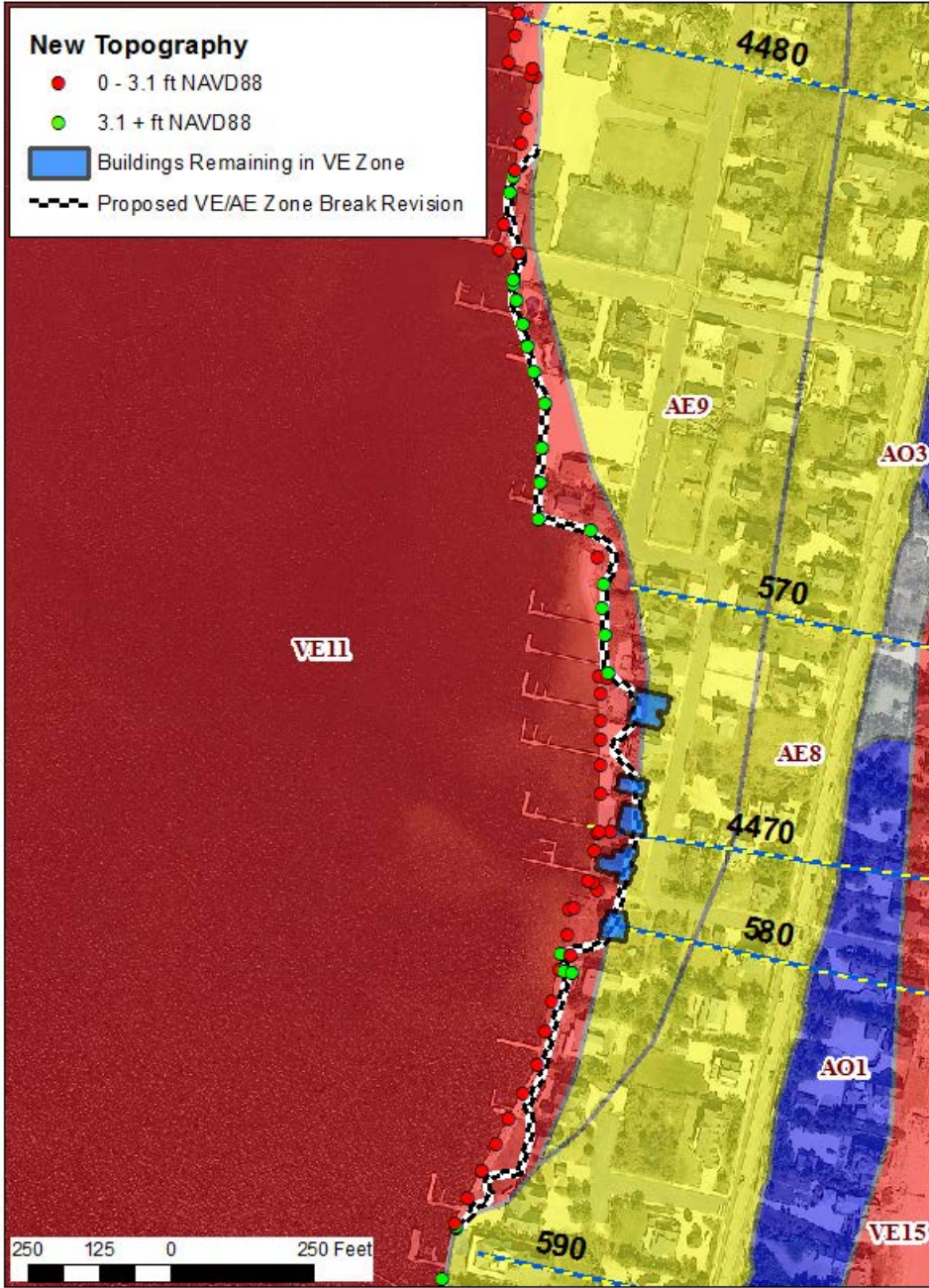


Figure 5. Proposed revisions to VE/AE Zone break in the Borough of Mantoloking, Ocean County, NJ

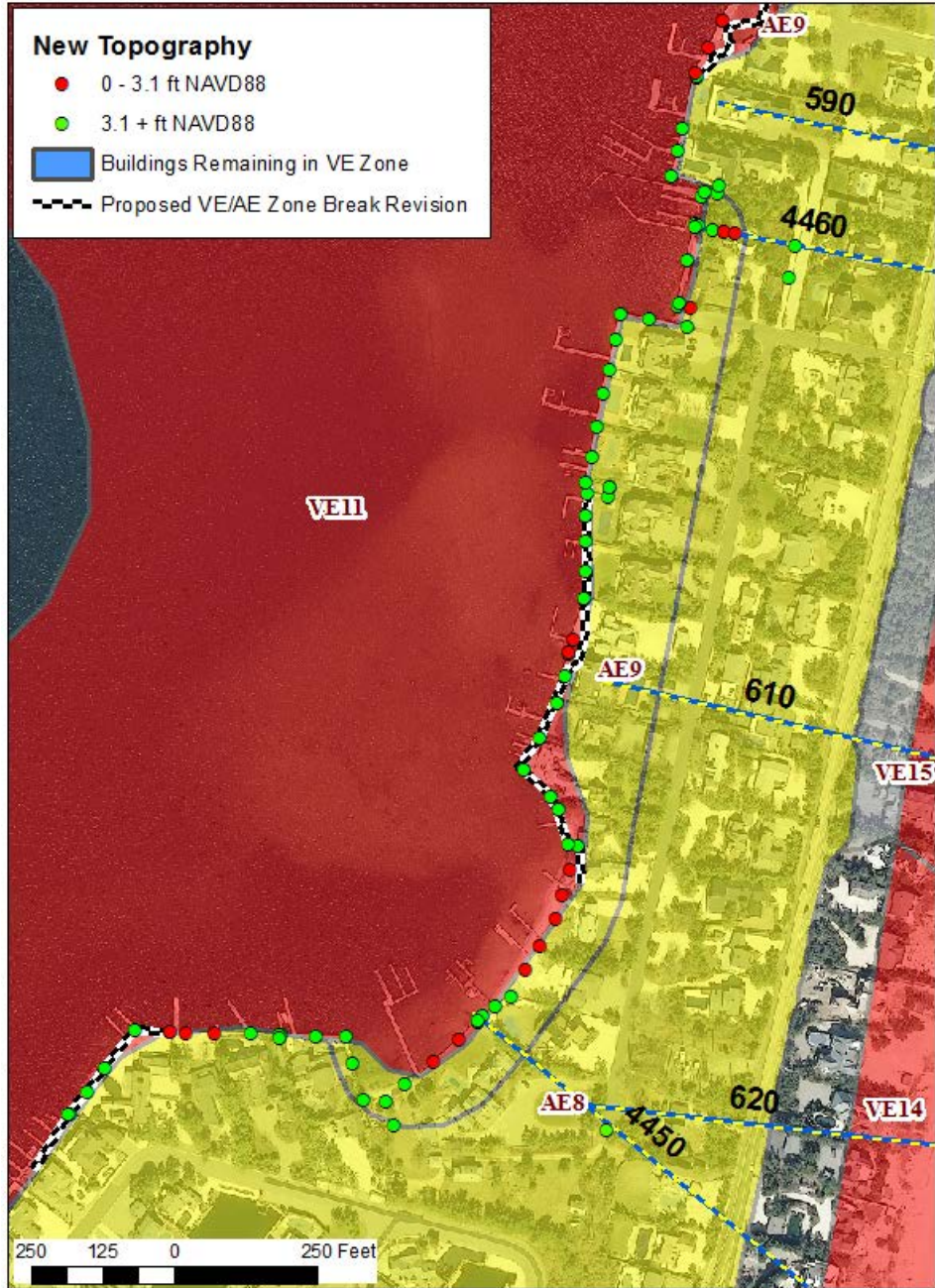


Figure 6. Proposed revisions to VE/AE Zone break in the Borough of Mantoloking, Ocean County, NJ