



# Mantoloking Environmental Commission/Green Team Newsletter

## Summer Edition

### Message from the Chairwoman

Welcome to the first Mantoloking Environmental Commission/Green Team Newsletter of 2021. Today's issue contains information on a number of topics related to water cleanliness and waste disposal which I'm hoping you find useful.

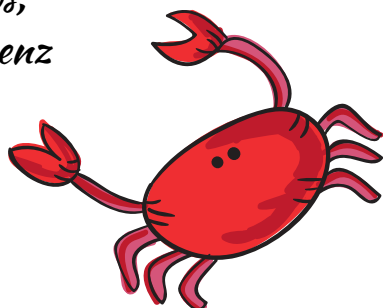
Look for our next Newsletter during the Fall of 2021. In the meantime, I encourage you to visit the [Mantoloking Environmental Commission Facebook page](#)



to keep abreast of environmental tips, new events and notices of interest pertinent to our town.

Thank you and see you on the beach!

*Warmest Regards,  
Barbara Hood Benz*



### Upcoming Events

**July 4th, 11:30 am – 1:30 pm, MYC -- Educational Table & Self-Guided Tour**

Learn more about the Environmental Commission, take a walking tour of some of your neighbors Native Gardens, and receive a reusable shopping bag & straw.

**July 8th, 5 pm, MYC – Education Presentation, “Climate Change – Let’s Talk About It”**

Dallas Hetherington of C-Change Conversations will be presenting the C-Change Primer, an hour-long, non-partisan and science-based presentation that addresses the key questions many Americans have about climate change. This presentation has been widely hailed as an intelligent, dispassionate introduction to and the illumination of this challenge. To learn more about C-Change Conversations and their work, please visit their website at <https://c-changeconversations.org/>



**Oct. 23rd, Beach Clean-up**

Look for more information on this event on our [Facebook page](#) as we approach the Fall.

# Recycling News and Tips

Recycling is great for our environment. However, did you know that “contaminated” loads are sent to be burned for energy or dumped in landfills?

Contamination occurs when recycled items aren't properly rinsed of debris OR nonrecyclable items are co-mingled with those that can be recycled



Therefore, the next time you recycle an item:

1. Give it a good rinse and
2. Ensure it's on the allowable list of items.

A general rule of thumb is that **When In Doubt, Throw It Out.** It could otherwise contaminate an entire load of recyclables.

Some typical things to watch out for include:

- With single-stream recycling, recyclables are co-mingled in containers. The only exception is large cardboard boxes which must be broken down and tied into bundles no more than 3' x 3'.
- **All caps, lids, and pumps (plastic or metal) should be placed in the trash.**
- Chipboard, which is used in tissue, cereal, pasta, beverage carriers, gift boxes, pizza boxes, paper plates, paper to-go containers, and paper towel & TP rolls, etc. CANNOT be recycled. **Chipboard is not the same as cardboard.**
- Soiled cardboard pizza boxes are considered to be contaminated and CANNOT be recycled.
- Recyclables should NEVER be placed in plastic bags. NO plastic bags can be recycled.
- Plastic bottles where the neck is smaller than the base of the container like beverage, shampoo/conditioner, laundry/dish detergent, milk jugs, condiments-ketchup and salad dressing can be recycled.

## Recycle Coach



### Confused as to Recycling Do's and Don'ts?

Download and use Recycle Coach, an app paid for by the State of NJ, which has been customized for Mantoloking's use:

- Ask questions about what can be recycled.
- Determine your Garbage, Recycling, and Bulk Pick-Up calendar.
- Find information on local Shredding and Hazardous Waste disposal events.

Recycling Coach is a free app available for download to your mobile device through the app store.





## Keeping Trash Out of our Waterways

According to the EPA, 80% of the marine litter found on coastlines during cleanups and surveys comes from land sources. We can therefore make a difference simply by picking up litter when we see it. Chances are that there's a garbage can not too far away.

Market Basket Stations are being placed at beach entrances at Princeton, Downer, Lyman, Williams, and Carrigan. When walking on the beach, grab one of these baskets to stow litter as you come across it. At the end of your walk, simply dump the trash in the garbage and return the basket to the station. Thanks to our dedicated DPW Team who built these new stations this year!



## Mantoloking Back Door Pick-up

The Borough of Mantoloking pays for “back door” pickup of both your trash and your recyclables. This avoids trash cans left on the street where they can block pedestrian traffic and become a hazard during high wind events. Click [here](#) to find specific rules and information on both trash and recycling pickup.



## Beach Water Quality Testing

From mid-May through mid-Sept., the water quality of our beaches is tested weekly by the Ocean County Health Department (OCHD) through the Cooperative Coastal Monitoring Program (CCMP), a program that has been in existence since 1974 due to a grant from the NJDEP.

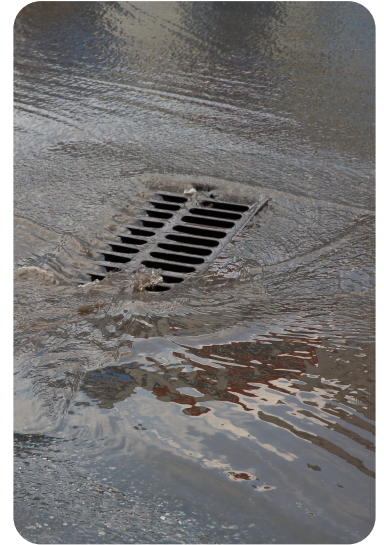


Water samples at two of our beaches – Lyman and Princeton -- are tested for both E. coli and Enterococci, a type of bacteria found in animal and human waste that is an indicator of possible bathing water quality. If found to exceed the allowable standard, the town is notified and the water is resampled the next day. If the re-sampling yields the same results, the beach is closed to swimming and bathing. Re-sampling will then occur daily until the bathing area meets the standard. For the latest reports, go to <https://www.ochd.org/water-reports-2021/> or [www.njbeaches.org](http://www.njbeaches.org).

# Protecting Our Waterways

While Shangri-La is a fictitious location enclosed in mountains, our little slice of heaven is surrounded by beautiful Jersey shore beaches on one side and Barnegat Bay on the other. It therefore becomes imperative that we protect these bodies of water.

According to the organization, Save Barnegat Bay, stormwater runoff is the biggest ecological problem that is currently facing Barnegat Bay. As our town continues to build out, more “impervious” surfaces are introduced from which stormwater runs off. This stormwater in turn carries pollutants that go straight into our storm drains and pass immediately into estuaries that drain into Barnegat Bay and the Atlantic Ocean.



## HOW CAN I HELP?



- Pickup animal waste which may carry E. coli, salmonella, or giardia.
- Use Native Plants that require less fertilizer (and less water!) than non-natives. Click [here](#) for more information on native plants.



- As per the **NJ Fertilizer Law** passed in 2011:

Do not apply fertilizer:



- When the ground is presumably frozen, Nov. 15th through March 1st (professionals are restricted to Dec. 1st through March 1st)
- On impervious surfaces
- When the ground is saturated with water
- During or just before a heavy rain

Ensure that any professionals are trained and/or certified in NJ. Rutgers University, who administers the online training and certification program, maintains a list of certified fertilizer applicators at <https://profact.rutgers.edu/trained-applicators>

- When (re)designing your home’s landscape, **consider use of surfaces that allow water to percolate through to the soil and sand below**, thus filtering out any pollutants before they hit our waterways.
- Avoid over the counter herbicides which may contain carcinogens. For driveway or walkway weeds, instead try putting vinegar in a spray bottle and spray directly onto weeds.
- If using pesticides, be careful with their application:
  - Do not overapply.
  - Do not apply on windy days.
  - Never mix or apply them near stormwater drains or bodies of water.